

Technical data sheet

Rev. 04.06.2021

Manufacturer: Vitrealpecchi spa

Base product: float glass to UNI EN 572 1-2.

Description: the glass is permanently chemically etched on one side to form a texture with points in relief, tracing a cross-shaped pattern. The tops of these high points are rendered opaque and rough, while the surrounding glass is shiny. It screens vision whilst allowing light through.

Sheet sizes: 2250/2400 x 3210 mm (usable size: 2210/2360 x 3170 mm).

Thicknesses: 8/10 mm

Colours: clear, extra-clear.

Availability of standard colours/thicknesses is subject to change. Please verify when ordering.

Weight: 2.5 kg/m² per millimetre of thickness.

Testing:

Slip resistance certified with BCR-Tortus method: $\mu > 0,40^*$

Slip resistance certified with pendulum method to BS 7976-2:2002: $> 35^{**}$

Slip resistance certified to DIN 51130:2014 classification R 11***

Slip resistance certified to DIN 51097:1992 classification B****

Slip resistance certified with BOT 3000 method to ANSI A137-1:2012: DCOF $> 0,42^{*****}$

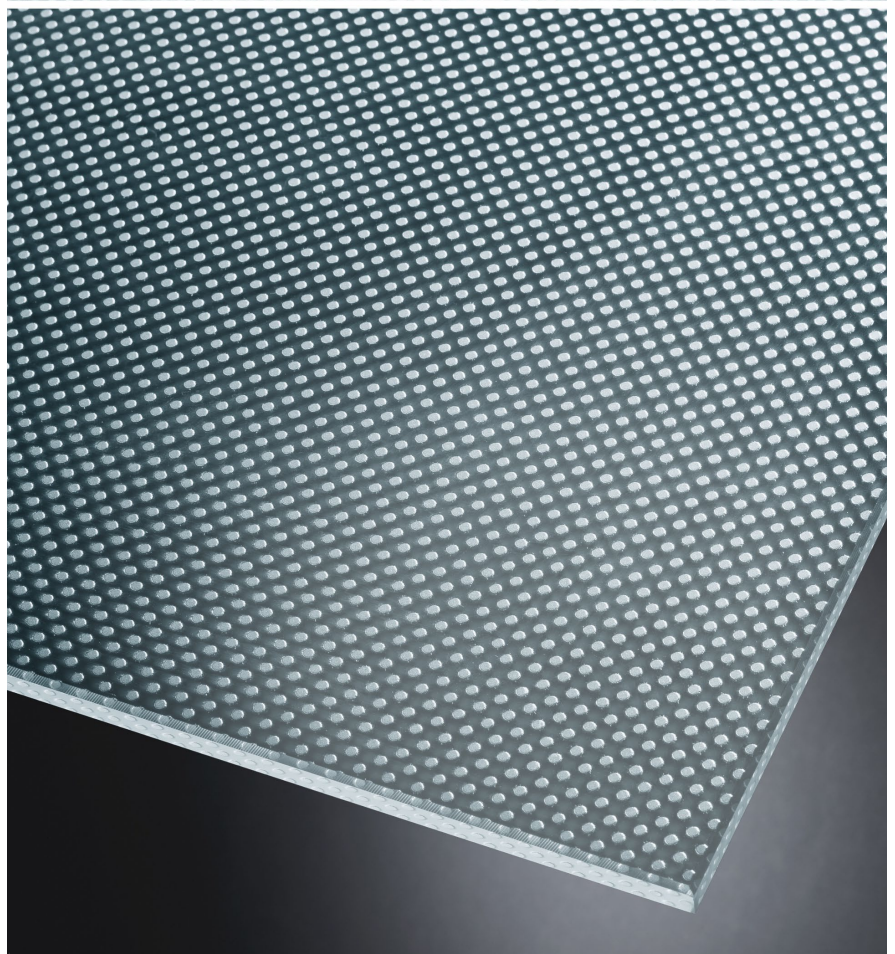
Resistance to surface abrasion certified to UNI EN ISO 10545-7:2000): PEI III*****

Internal and external applications: walking surfaces, steps, flooring, hanging floors, walkways etc.

Compatible processing: all mechanical and thermal processes associated with glass: cutting, grinding, bevelling, drilling, laminating, toughening etc.

Cleaning: care must be taken when installing the glass not to get putty, resin, sealants, etc., on the treated side. Each of these substances requires a specific solvent for removing traces from glass. For routine maintenance, use water and/or any of the commonly marketed glass detergents. Dry immediately with a clean cloth, preferably micro-fibre.

Pixel Flooring



Colours and finishings in the photographs may look slightly different from those of the real products: we recommend that customers examine sample glass before choosing products.

Pixel Flooring

Storage and handling:

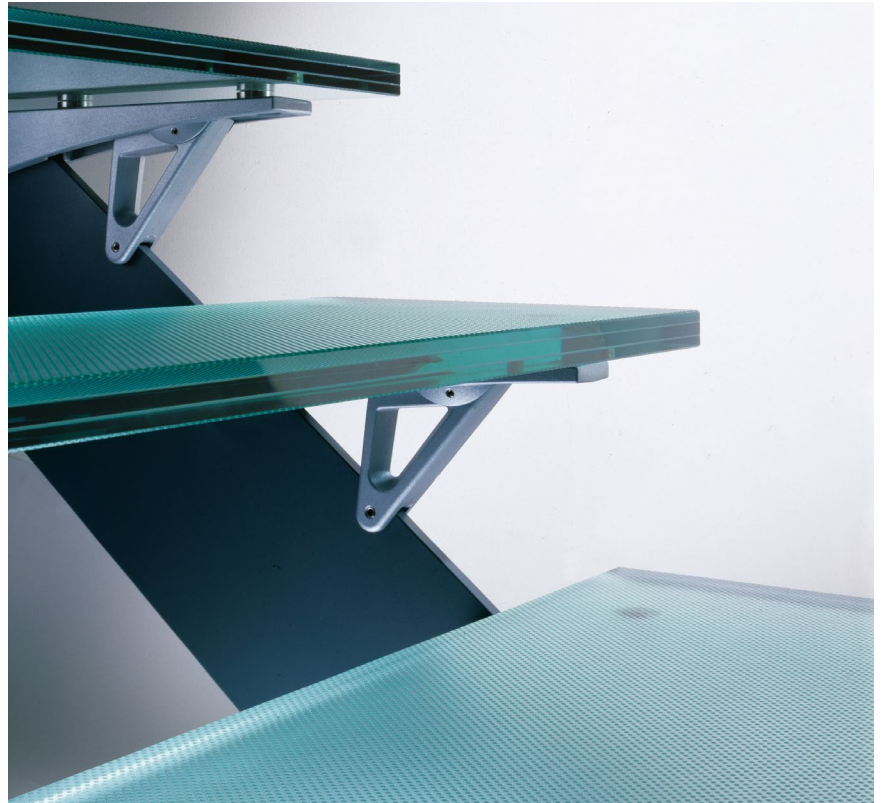
- it is advisable to unpack immediately after reception and store in a dry, well-ventilated place free from sudden changes of temperature to avoid condensation;
- *never* store outdoors;
- when storing for over 3 months, it's advisable to remove the paper from between the plates;
- in the case of storage in unfavourable environmental conditions (high humidity and strong temperature changes), it is advisable to slightly space one plate from another;
- storing for more than 12 months is not advisable;
- to avoid scratching the surface of the glass during handling and storage, plates should always be separated by means of spacers.

Qualitative characteristics: chemically etched glass may present slight morphological differences – in terms of etching depth, surface crystallization and light reflection for example – within a single plate and between one plate and another. Such differences are typical of the production process, which by its very nature is not totally controllable, and are therefore not to be considered defects. Not perceptible on small surfaces, they can be perceived more easily in the perspective view of large surfaces.

Defect acceptance limits: for all defects coming from float glass production: as per UNI EN 572.2. For all defects coming from the chemical processing:

DEFECT SIZE mm	MAX DEFECT NO./ SHEET	AVERAGE NO./ 20 SMQ
> 0,6 and < 1,5	3	5
> 1,5 and < 3,0	1	2
> 3,0 and < 9,0	Upon customer's acceptance only	Upon customer's acceptance only

- * Main Laboratory Sassuolo/Italy: test report no. 0273/2015.
- ** Main Laboratory Sassuolo/Italy: test report no. 2196/2014.
- *** Main Laboratory Sassuolo/Italy: test report no. 0290/2015.
- **** Main Laboratory Sassuolo/Italy: test report no. 0391/2015.
- ***** TCNA:Anderson/SC/Usa: test report no. 562-13.
- ***** Main Laboratory Sassuolo/Italy: test report no. 4508/2015.



Colours and finishings in the photographs may look slightly different from those of the real products: we recommend that customers examine sample glass before choosing products.